

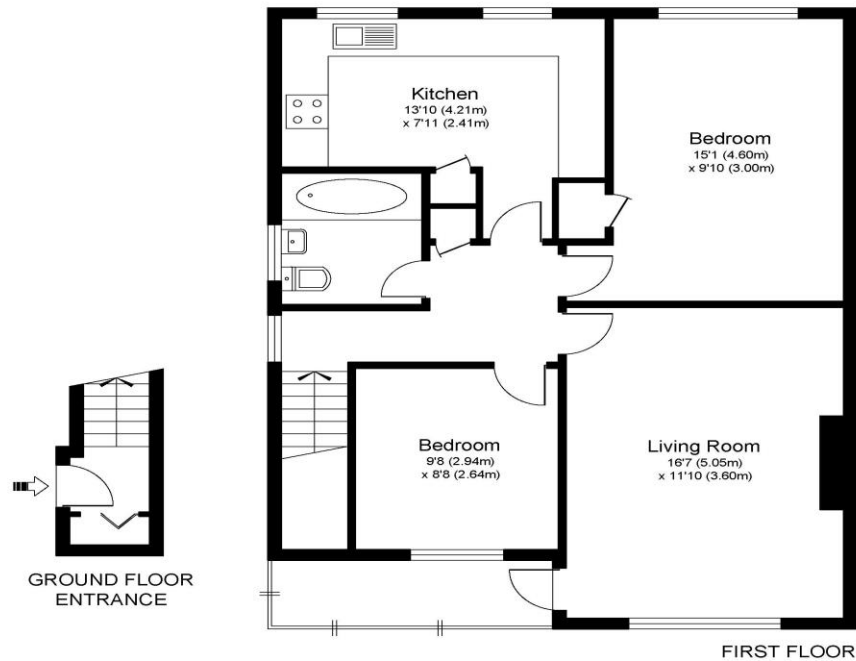


6 Betley Court Walton-On-Thames Surrey KT12 3BT

£1525pcm + Initial Deposit



BETLEY COURT KT12



Approximate Gross Internal Floor Area: 70 m sq / 752 sq ft

Whilst every attempt has been made to ensure the accuracy of the floor plan contained here, measurements of doors, windows and rooms are approximate and no responsibility is taken for any error, omission or misstatements. These plans are not to scale and are for representation purposes only as defined by RICS Code of Measuring Practice and should be used as such by any prospective purchaser. Specifically no guarantee is given on total square footage of the property if quoted on this plan. Any figure given is for initial guidance only and should not be relied on as a basis of valuation.

A two-bedroom first floor maisonette giving plenty of living accommodation within a cul-de-sac location under half a mile from Walton-on-Thames train station. This home has a nice feel to it throughout. Both bedrooms are good double rooms, the kitchen is separate to the living space and there is plenty of hallway space with access to a large loft for further storage options. The living room also has access to a southerly facing balcony to the front of the building. There is a strip of open garden space to the rear and residents parking permits are available via the local council. You also benefit from a garage in a close by block. Located within a small cul-de-sac just moments from the halfway shopping amenities and within half a mile of Walton-on-Thames mainline train station with its fast train service into London Waterloo. Available from the 19th of September 2024, unfurnished. EPC Rating C.



AGENTS NOTES: These details do not constitute any part of an offer or contract. In issuing them we do not have any authority to give any warranty or representation whatsoever in respect of this property. These details are provided without any responsibility on our part or the part of the vendors. No statements in these details are to be relied upon as representations of fact and purchasers should satisfy themselves by inspection or otherwise as to the accuracy of the statements contained therein.

Equipment: We have not tested the equipment or central heating system mentioned in these particulars and purchasers are advised to satisfy themselves as to their working order and condition.

Measurements: Great care is taken when measuring but measurements should not be relied upon for ordering carpets, equipment, etc.